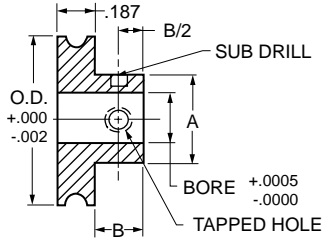
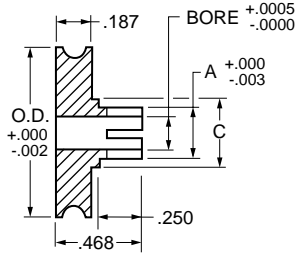


- FOR 1/8" ROUND BELT
- PIN TYPE

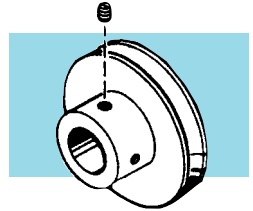
- 1/8", 3/16" & 1/4" BORES
- CLAMP TYPE



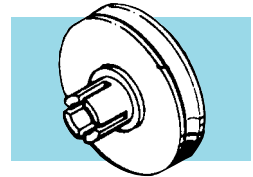
PIN-TYPE HUB



CLAMP-TYPE HUB



PIN-TYPE HUB



CLAMP-TYPE HUB

NOTE: Groove has .062 Radius, .062 Deep

MATERIAL: 303 Stainless Steel

| Catalog Number | | O.D. +.000 -.002 | BORE +.0005 -.0000 | A | | B | C | Pin Type | |
|----------------|----------------|------------------------|--------------------------|------|-------|------|------|-----------|-----------|
| Pin Type Hub | Clamp Type Hub | | | Pin | Clamp | | | Set Screw | Sub Drill |
| S1083Y-PA-01 | S1183Y-PD-01 | .500 | .1248 | .312 | .188 | .187 | .250 | #2-56 | .029 |
| S1083Y-PA-02 | S1183Y-PD-02 | .750 | | | | | | | |
| S1083Y-PA-03 | S1183Y-PD-03 | 1.000 | | | | | | | |
| S1083Y-PA-04 | S1183Y-PD-04 | 1.500 | | | | | | | |
| S1083Y-PA-05 | S1183Y-PD-05 | 2.000 | | | | | | | |
| S1083Y-PA-06 | S1183Y-PD-06 | 2.500 | | | | | | | |
| S1084Y-PB-01 | S1184Y-PE-01 | .500 | .1873 | .375 | .250 | .218 | .312 | #4-40 | .040 |
| S1084Y-PB-02 | S1184Y-PE-02 | .750 | | | | | | | |
| S1084Y-PB-03 | S1184Y-PE-03 | 1.000 | | | | | | | |
| S1084Y-PB-04 | S1184Y-PE-04 | 1.500 | | | | | | | |
| S1084Y-PB-05 | S1184Y-PE-05 | 2.000 | | | | | | | |
| S1084Y-PB-06 | S1184Y-PE-06 | 2.500 | | | | | | | |
| S1086Y-PC-01 | S1186Y-PF-01 | .500 | .2498 | .500 | .312 | .250 | .375 | #6-32 | .086 |
| S1086Y-PC-02 | S1186Y-PF-02 | .750 | | | | | | | |
| S1086Y-PC-03 | S1186Y-PF-03 | 1.000 | | | | | | | |
| S1086Y-PC-04 | S1186Y-PF-04 | 1.500 | | | | | | | |
| S1086Y-PC-05 | S1186Y-PF-05 | 2.000 | | | | | | | |
| S1086Y-PC-06 | S1186Y-PF-06 | 2.500 | | | | | | | |
| S1086Y-PC-07 | S1186Y-PF-07 | 3.000 | | | | | | | |
| S1086Y-PC-08 | S1186Y-PF-08 | 3.500 | | | | | | | |